



Plissé & Duette® Shades

HunterDouglas

WINDOW COVERINGS

Plissé Shades

Plissé Shades from Hunter Douglas, feature crisp, 20 mm fabrics in an extensive range of Fire Retardant project colors and transparencies. Heat reflective Topar® & Metalized coatings provide additional performance for increased energy efficiency, enhanced light and glare control, making Plissé Shades an ideal solution for managing intense and direct sunlight.

Light Control

Plissé and Duette® Shades have additional features that help manage light and glare for a number of situations.

COMBI SHADE

The most effective solution for managing light and glare for working spaces is a Combi Shade with two adjustable transparency levels that can be controlled independently from each other. Daylight, or excess glare can be optimally regulated the operator desk or via computer monitor through intelligent control systems.

MULTIVISION™ CONCEPT

Multivision™ for fabrics manages glare or excess light from a specifically oriented façade. From transparent to dim-out qualities, Multivision™ optimizes light regulation by maintaining the level of view to the outside each individual room, whilst maintaining a uniform colour appearance throughout the entire building's façade for a consistent aesthetic.

Heat Control

HONEYCOMB DESIGN

The highly energy-efficient cellular design of Plissé and Duette® Shades provide substantial levels of insulation and reduce energy exchange in the window during winter and summer. In addition, the shades and provide 99% UV blocking. The honeycomb structure makes the fabric extremely strong, durable and less prone to wrinkles.

TOPAR® & METALIZED COATINGS

For increased light and sun radiation reflection, Plissé fabric can be treated with Topar®, a coloured reflective coating that is humidity resistant, dirt repellent and long lasting. Metalized coated fabrics provide outstanding performance in the reflection of sunlight and heat.

SANAPLUS™

Sanaplus™ antibacterial coating for Plissé and Duette® Shades, are designed to meet rigorous standards for hygiene and health protection in hospitals, medical centers, laboratories, professional kitchens, canteens and schools.



Duette® Shades

Duette® Shades revolutionized window covering with outstanding energy efficiency, durability, light filtering and clean aesthetic. HunterDouglas® Duette® Shades are available in a range of Fire Retardant fabrics and colours with 20, 32 & 64 mm wide pleats.

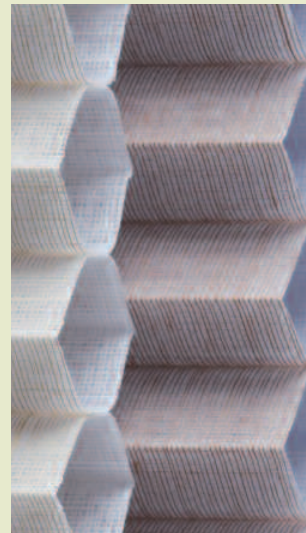
DUETTE® ARCHITELLA®

Duette® Architella® Shades are one of Hunter Douglas latest innovations featuring a honeycomb pleated fabric construction with three air pockets, making it one of the most distinctive and energy-efficient shades available.

During the winter, significant amounts of warmth escape via glass windows, but using Duette® Architella® Shades increases window's insulating properties by 50%. In the summer when increased energy is used for cooling as solar radiation and heat enters the windows, translucent Duette® Architella® Shades cut down solar heat gain by more than 50%. All year round Duette® Architella® Shades significantly reduce energy costs.

DESIGN, FUNCTIONALITY & COMFORT

- Outstanding energy & heat control through a unique honeycomb structure, all year round
- Plissé & Duette® Shades are Fire Retardant, DIN 4102 B1
- Strong and durable rail system
- Optimal room darkening shades
- Design flexibility for irregular shaped windows
- Special finishes: metalized, Topar® and Sanaplus™
- Duette® Fixé in all Duette® fabrics
- Colour coordinated operating mechanism
- Ideal for skylights or ceiling applications
- No visible lift cords
- Shading options: Combi Shade and Multivision™
- Control options from manual to fully motorized



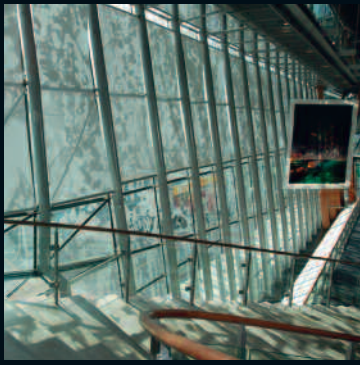
Duette® Shades



Duette® Architella®

Learn More: www.hunterdouglascontract.com

Heat & light control



Austria
Belgium
Bulgaria
Croatia / Slovenia
Czechia
Denmark
France
Germany
Greece
Hungary
Ireland
Italy
Kazakhstan
the Netherlands
Norway
Poland
Portugal
Romania
Russia
Serbia
Slovakia
Spain
Sweden
Switzerland
Turkey
Ukraine
United Kingdom
Africa
Middle East

Asia
Australia
Latin America
North America

HUNTER DOUGLAS EUROPE B.V.
2, Piekstraat
P.O. Box 5072 - 3008 AB Rotterdam
Tel. +31 (0)10 - 4869911
Fax +31 (0)10 - 4847910
www.hunterdouglascontract.com

HunterDouglas

WINDOW COVERINGS | CEILINGS | SUN CONTROL | FAÇADES