



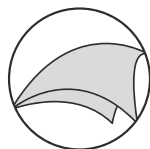
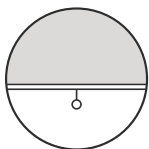
Sergé 3% OF 3%

WS03A

FABRIC CODE

Ultra wide range of proprietary woven screen fabrics. Unsurpassed flexibility, applicable in any kind of situation.

Can be used both exterior and interior.



Sergé 3% OF 3%

WS03A FABRIC CODE

Yarn

Technical specifications	Average Values	Standard
Titer	165 tex	ISO 1889 (2009)
Weighted composition	Glass 41.5%, PVC 58.5%	ISO 3801 (1977)
Diameter	0.38 mm	
Environment		Oekotex standard 100



Fabric











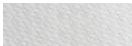
Type of fabric	PVC-coated fiberglass fabric
Weave pattern	twill weave
Widths	1600, 1800, 2050, 2500, 2850, 3200 mm depending on color (see overview on the right page)
Roll length (nominally)	50 m / 2850 mm: 40 m / 3200 mm: 33 m

Technical specifications	Average Values	Standard
Thickness	0.80 mm	ISO/DIS 5084.2 (1996)
Mass	544 g/m ²	ISO 3801 (1977)
Fire resistance	M1	NF P92-503 (1995)
	FR	NFPA 701 (2010)
	B1	DIN 4102 (1998)
	C-s3, d0	EN 13501-1 (2010)
Breaking strength	warp 310 daN, weft 230 daN	ISO 13934-1 (1999)
Elongation at break	warp 3.8%, weft 4.2%	ISO 13934-1 (1999)
Tear resistance	warp 10 daN, weft 13 daN	ISO 4674 part 1 method A (2003)
Acoustics	Qw: 0,10	ISO 354:2003
Colorfastness (white excluded)	7 scale of blue	ISO 105 B02 (1994)
Air porosity	1030 l/m ² /sec	ISO/DIS 9237 (1995)

Processing

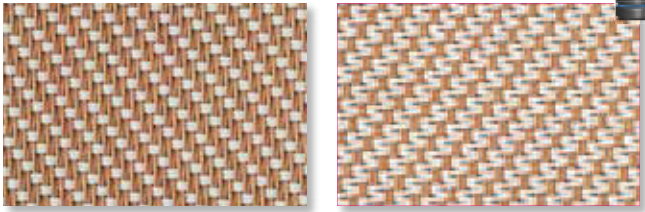
General - specifications are purely indicative and may not be considered as binding. Colors may vary from the samples shown.

Cutting	crush or ultrasonic; railroad or width out of roll width
Welding	thermal, HF, ultrasonic, sewing
Cleaning	remove dust from the fabric surface, then wipe gently with a humid soft sponge while using a mild detergent

Color	Color code	Name	1600 mm	1800 mm	2050 mm	2500 mm	2850 mm	3200 mm
	108101	grey-white *	•	•	•	•	•	•
	108108	grey *	•	•	•	•	•	•
	108112	grey-sand	•	•	•	•	•	•
	108118	grey-black *	•	•	•	•	•	•
	112101	sand-white	•	•	•	•	•	•
	117101	pearl-white *	•	•	•	•	•	•
	117108	pearl-grey	•	•	•	•	•	•
	117117	pearl	•	•	•	•	•	•
	118113	black-bronze	•	•	•	•	•	•
	118118	black *	•	•	•	•	•	•
	101101	white	•	•	•	•	•	

* Also available in OF 5%, widths 1800, 2500, 2850 mm, MOQ: 300 m

112101 sand-white A / B
Widths: 1600, 1800, 2050, 2500, 2850, 3200 mm



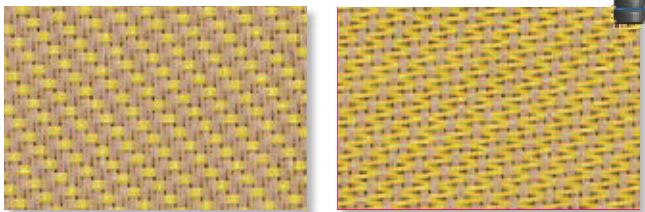
Solar Heat & Light Control Properties

	Ts	Rs	As	Tv	TVdiff	TVdir	Tuv	TVdif-h	Glare control
A	12.2	44.8	43	10.6	6	4.6	5.1	8.7	Class 1
B	12.2	50.6	37.2	10.6	6	4.6	5.1	8.7	Class 1

gtot

	A		B		C		D	
	ext.	int.	ext.	int.	ext.	int.	ext.	int.
A Values	0.2	0.47	0.17	0.47	0.12	0.42	0.09	0.27
A Classes	2	1	2	1	3	1	4	2
B Values	0.19	0.43	0.16	0.44	0.11	0.41	0.08	0.26
B Classes	2	1	2	1	3	1	4	2

112103 sand-yellow A / B
Width: 2850 mm



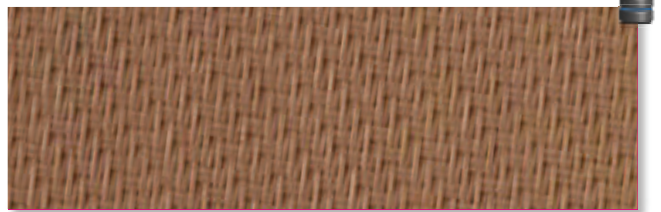
Solar Heat & Light Control Properties

	Ts	Rs	As	Tv	TVdiff	TVdir	Tuv	TVdif-h	Glare control
A	16.5	40.8	42.6	13.2	7.5	5.7	6.3	10.9	Class 0
B	16.5	42.4	41	13.2	7.5	5.7	6.3	10.9	Class 0

gtot

	A		B		C		D	
	ext.	int.	ext.	int.	ext.	int.	ext.	int.
A Values	0.24	0.5	0.2	0.5	0.15	0.44	0.11	0.27
A Classes	2	1	2	1	3	1	3	2
B Values	0.24	0.49	0.2	0.49	0.15	0.43	0.11	0.27
B Classes	2	1	2	1	3	1	3	2

112112 sand
Widths: 1600, 1800, 2050, 2500, 2850 mm



Solar Heat & Light Control Properties

	Ts	Rs	As	Tv	TVdiff	TVdir	Tuv	TVdif-h	Glare control
	8.2	38.3	53.5	6.7	3.1	3.7	4.2	5.5	Class 2

gtot

	A		B		C		D	
	ext.	int.	ext.	int.	ext.	int.	ext.	int.
Values	0.19	0.5	0.15	0.5	0.1	0.44	0.08	0.27
Classes	2	1	2	0	3	1	4	2

113113 bronze
Widths: 1600, 1800, 2050, 2500, 2850 mm



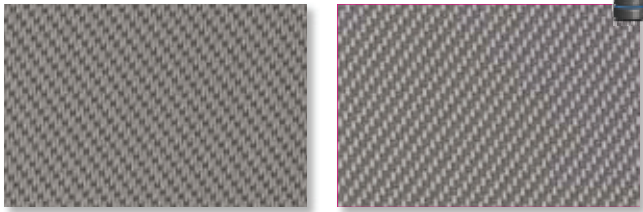
Solar Heat & Light Control Properties

	Ts	Rs	As	Tv	TVdiff	TVdir	Tuv	TVdif-h	Glare control
	4.8	9.1	86.1	4.7	0.5	4.2	4.6	3.5	Class 3

gtot

	A		B		C		D	
	ext.	int.	ext.	int.	ext.	int.	ext.	int.
Values	0.23	0.67	0.17	0.65	0.11	0.54	0.09	0.3
Classes	2	0	2	0	3	0	4	2

117108 pearl-grey A/B
Widths: 1600, 1800, 2050, 2500, 2850, 3200 mm



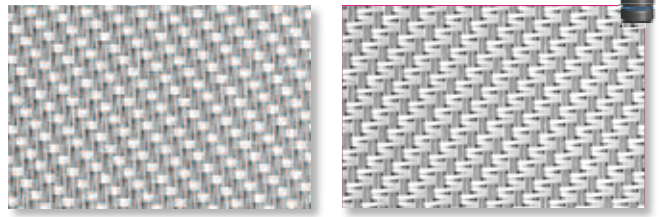
Solar Heat & Light Control Properties

	Ts	Rs	As	Tv	TVdiff	TVdir	Tuv	TVdif-h	Glare control
A	11	29.8	59.2	9.1	4.3	4.8	5.4	7.4	Class
B	11	25.5	63.6	9.1	4.3	4.8	5.4	7.4	Class

gtot

	A		B		C		D	
	ext.	int.	ext.	int.	ext.	int.	ext.	int.
A Values	0.23	0.55	0.18	0.55	0.12	0.47	0.1	0.2
A Classes	2	0	2	0	3	1	4	2
B Values	0.23	0.58	0.19	0.57	0.13	0.49	0.1	0.2.
B Classes	2	0	2	0	3	1	3	2

117101 pearl-white A/B
Widths: 1600, 1800, 2050, 2500, 2850, 3200 mm



Solar Heat & Light Control Properties

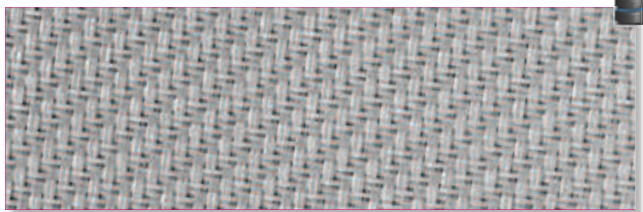
	Ts	Rs	As	Tv	TVdiff	TVdir	Tuv	TVdif-h	Glare control
A	7.2	46.9	45.9	5.8	3.3	2.4	2.8	4.7	Class 2
B	7.2	53.5	39.3	5.8	3.3	2.4	2.8	4.7	Class 2

gtot

	A		B		C		D	
	ext.	int.	ext.	int.	ext.	int.	ext.	int.
A Values	0.16	0.45	0.13	0.46	0.09	0.42	0.07	0.27
A Classes	2	1	3	1	4	1	4	2
B Values	0.15	0.41	0.12	0.42	0.08	0.39	0.06	0.26
B Classes	3	1	3	1	4	1	4	2

* Also available in OF 5% widths 1800, 2500, 2850 mm, MOQ: 300 m

117117 pearl
Widths: 1600, 1800, 2050, 2500, 2850, 3200 mm



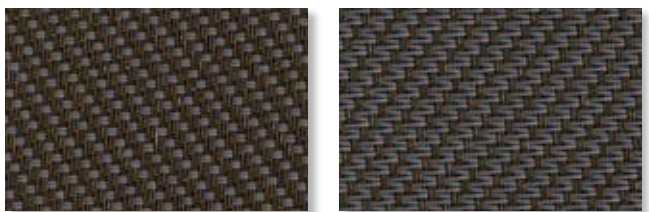
Solar Heat & Light Control Properties

	Ts	Rs	As	Tv	TVdiff	TVdir	Tuv	TVdif-h	Glare control
	7.7	39.7	52.6	6	2.6	3.4	3.8	4.8	Class 2

gtot

	A		B		C		D	
	ext.	int.	ext.	int.	ext.	int.	ext.	int.

118113 black-bronze A/B
Widths: 1600, 1800, 2050, 2500, 2850, 3200 mm



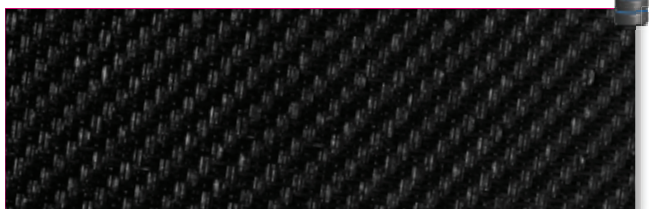
Solar Heat & Light Control Properties

	Ts	Rs	As	Tv	TVdiff	TVdir	Tuv	TVdif-h	Glare control
A	6.0	5.8	88.2	5.8	0.5	5.3	5.8	4.4	Class 1
B	6.0	6.2	87.9	5.8	0.5	5.3	5.8	4.4	Class 1

gtot

	A		B		C		D	
	ext.	int.	ext.	int.	ext.	int.	ext.	int.
A Values	0.24	0.69	0.19	0.67	0.12	0.55	0.10	0.30
A Classes	2	0	2	0	3	0	3	2
B Values	0.24	0.68	0.19	0.67	0.12	0.55	0.10	0.30
B Classes	2	0	2	0	3	0	3	2

118118 black
Widths: 1600, 1800, 2050, 2500, 2850, 3200 mm



Solar Heat & Light Control Properties

	Ts	Rs	As	Tv	TVdiff	TVdir	Tuv	TVdif-h	Glare control
	2.6	5.2	92.2	2.6	0.3	2.3	2.6	2	Class 3

gtot

	A		B		C		D	
	ext.	int.	ext.	int.	ext.	int.	ext.	int.
Values	0.22	0.69	0.16	0.67	0.1	0.55	0.09	0.3
Classes	2	0	2	0	3	0	4	2

* Also available in OF 5% widths 1800, 2500, 2850 mm, MOQ: 300 m